



# JmRoller

## PRODUCT CATALOGUE

No.46 Jianshe Street, Shijiazhuang City, Hebei Province

China 050000 

# China Juming Roller



Website: [www.HBJUMING.com](http://www.HBJUMING.com)

# WELCOME

## CONTENT

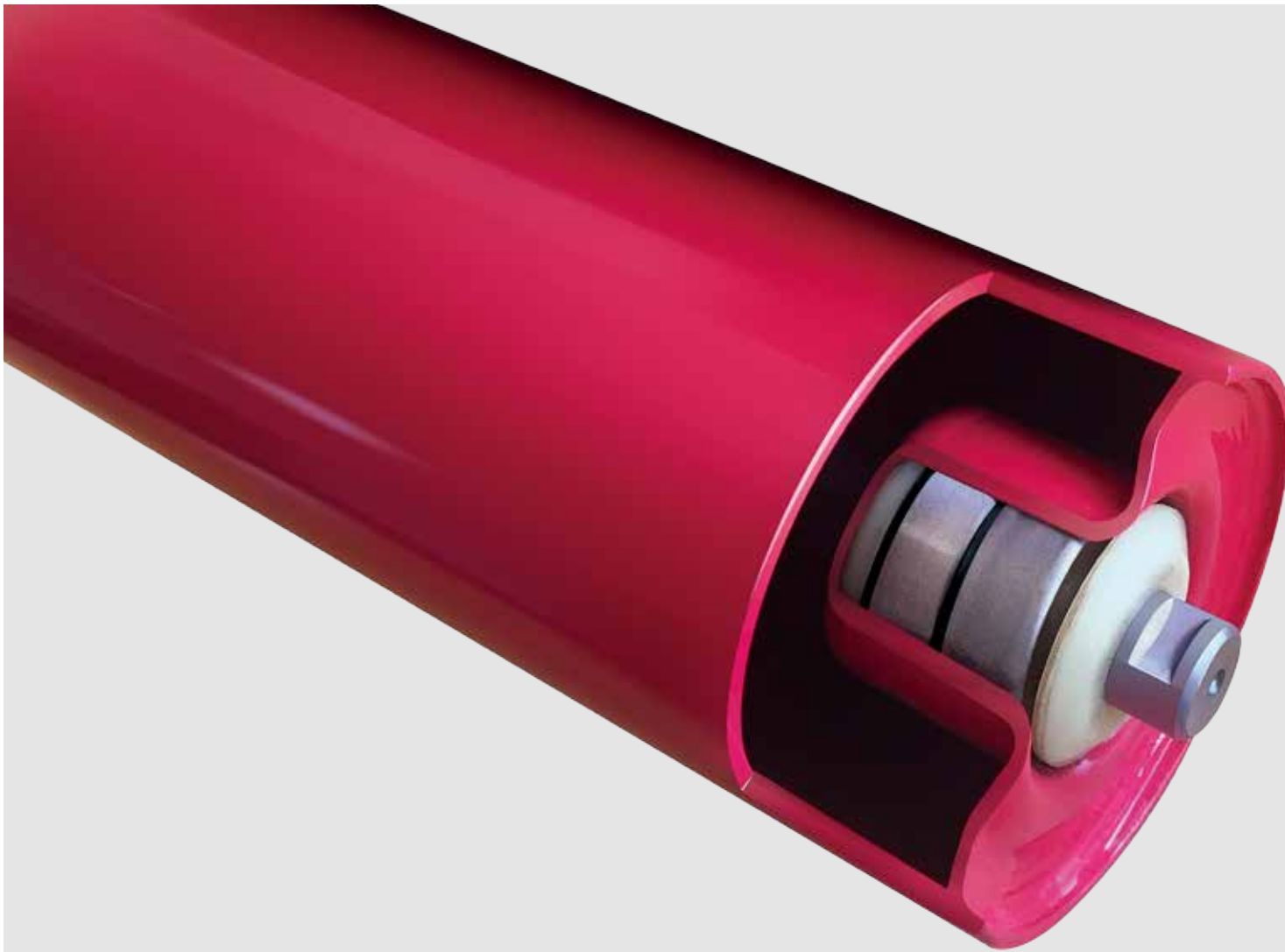
- 
- 01** China Juming Roller
  - 04 Company Overview
  - 05 Product Catalogue
  - 06 Qualification And Glory

- 
- 07** Type Of Carrying
  - 08 Type Of Return
  - 09 Photo Gallery
  - 11 Product Classification

- 
- 12** Shaft Slot Type
  - 13 Carrier Roller
  - 14 Impact Roller
  - 15 HDPE Roller

- 
- 16** Return Roller
  - 17 Spiral Return Roller
  - 18 Rubber Disc Roller
  - 19 Carrier/Impact Stand

- 
- 20** Transition Stand
  - 21 Self Aligning Carrier
  - 21 Self Aligning Return
  - 23** Self Aligning V-Return
  - 24 Drum Pulley
  - 25 Performance Display



# JM Roller

PRODUCT CATALOGUE

No.46 Jianshe Street, Shijiazhuang City, Hebei Province  
China 050000



Together, We Make It Better.



Website: www.HBJUMING.com

# Juming Roller

Our vision is to be Perfect,  
Excellent and Best in the World

Hebei Juming Conveyor Machinery was founded in 1980, engaged in the manufacture of conveyor & conveyor parts, including various kinds of conveyor rollers, conveyor pulleys and support frames, widely used for mine, coal, cement, electric power metallurgy, steel, chemical, port, hydroelectric power and grain industries, etc.

With more than thirty years' abundant experience and industries and hardworking staff members, we can meet various requirements from different types of customers. Our products have exported to many countries all over the world, especially the USA, Canada, the UK, Denmark, Greece, South America, Australia, South East Asia, South Africa and Middle East. At present we have very good feedback from customers and build long term cooperation relationship with them.

In addition, we have attained ISO 9001, SGS, BV and CE certifications. There is rich experiences for us to manufacture all standard, such as JIS, DIN and CEMA (A B C D). Besides we accept OEM service and can manufacture as customers' drawings and requirements.

Together, we make it better is our company's slogan. As a company with strong responsibility and good reputation, we are always committed to providing high quality, competitive price and best after-sales service to every customer. We warmly welcome customers all over the world and we will try our best to make advantage for you.

Company Overview 

bulk material handling solutions



Together, We Make It Better.

# JM Roller

## PRODUCT CATALOGUE

No.46 Jianshe Street, Shijiazhuang City, Hebei Province  
China 050000

JUMING



HEBEI JUMING  
CONVEYOR MACHINERY



Together, We Make It Better.



Website: [www.HBJUMING.com](http://www.HBJUMING.com)



# QUALIFICATION AND GLORY

bulk material handling solutions/



a



Troughing roller stand for general carrying service is produced with inclination degree of 20° ,30° ,35° ,45°

c



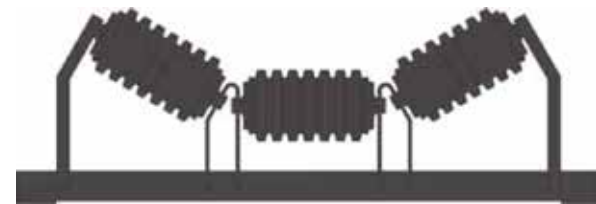
Flat carrier roller stand used to bulk handling material such as preparing foundry sand, package and sort conveyor.

b



Self-aligning carrier roller automatically trains belt and protects edges from damage cause misalignment. It's produced with inclination degree of 30° ,35° ,45°

d



Troughing rubber impact roller stand protects belt by absorbing impact at loading and transfer point. It's produced with inclination degree of 30° ,35° ,45°

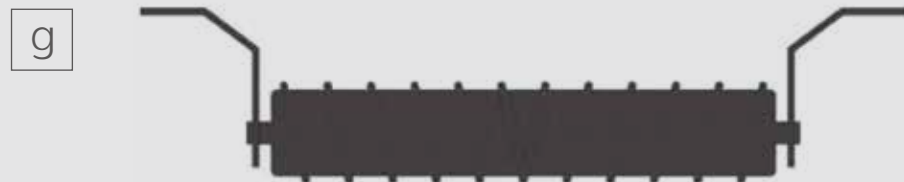
## TYPE OF RETURN



Return roller carries the empty belt on return run.



Rubber Disc Return roller used when wet, sticky material tends to cling to the belt. Also used to avoid corrosion .It's produced in NR or SBR.



Spiral Return roller used to clean from materials that adhere to the belt. It's produced in spiral rubber.



Self-aligning return roller automatically trains the belt return and protects edges from damage cause by belt misalignment.



Rigid frame V return roller trains the return belt,adds benefit when carrying more capacities. It's produced with inclination degree of 5° ,10° and 15° .

# JM Roller

## PRODUCT CATALOGUE

No.46 Jianshe Street, Shijiazhuang City, Hebei Province  
China 050000



CARRIER ROLLER



RUBBER DISC  
RETURN ROLLER



HDPE  
CARRIER ROLLER



IMPACT ROLLER  
GUIDE ROLLER

PHOTO GALLERY

# PHOTO GALLERY



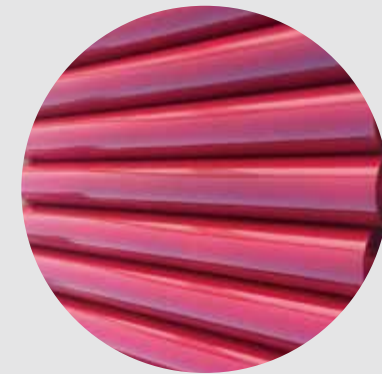
◀ SPIRAL RUBBER RETURN ROLLER



TAKE UP PULLEY



IMPACT ROLLER SET



RETURN ROLLER



SELF ALIGNING CARRIER ROLLER



DRIVE PULLEY WITH CERAMIC LAGGING



CARRIER ROLLER SET

■ CRS - ■ 100 - ■ 30 - ■ A1 - ■ 02

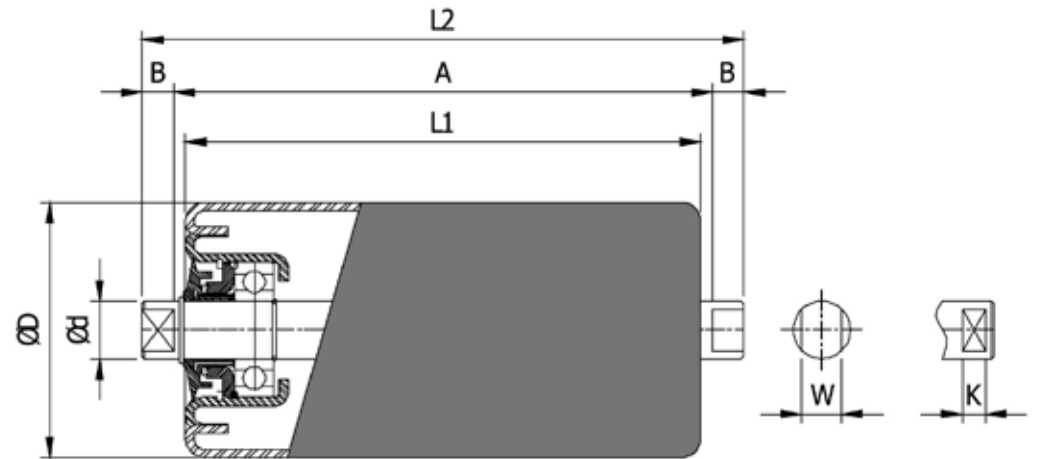
| Description     |                                 | Belt Width |                         | Trough Angle   |                 |                 |  |            |                        |    |                        |
|-----------------|---------------------------------|------------|-------------------------|--|-----------------|-----------------|--|------------|------------------------|----|------------------------|
| CR              | Carrier Roller                  | 40         | 400                     | 00   | 0° /Roller Only |                 |  |            |                        |    |                        |
| IR              | Impact Roller                   | 45         | 450                     | 05   | 5°              |                 |  |            |                        |    |                        |
| RR              | Return Roller                   | 50         | 500                     | 10   | 10°             |                 |  |            |                        |    |                        |
| VR              | V – Return Roller               | 60         | 600 $\varnothing$ 89.1  | 15   | 15°             |                 |  |            |                        |    |                        |
| RDR             | Rubber Disc Return Roller       | 65         | 650                     | 20   | 20°             |                 |  |            |                        |    |                        |
| SRR             | Spiral Return Roller            | 61         | 600 $\varnothing$ 114.3 | 25   | 25°             |                 |  |            |                        |    |                        |
| GR              | Guide Roller                    | 75         | 750                     | 30   | 30°             |                 |  |            |                        |    |                        |
| PEC             | HDPE Carrier Roller             | 80         | 800                     | 35   | 35°             |                 |  |            |                        |    |                        |
| PER             | HDPE Return Roller              | 90         | 900                     | 45   | 45°             |                 |  |            |                        |    |                        |
| CRS             | Carrier Roller Stand            | 100        | 1000                    | <table border="1"> <thead> <tr> <th colspan="2">Shaft Slot Type</th> </tr> </thead> <tbody> <tr> <td colspan="2">See page 9</td> </tr> </tbody> </table>   |                 | Shaft Slot Type |  | See page 9 |                        |    |                        |
| Shaft Slot Type |                                 |            |                         |  |                 |                 |  |            |                        |    |                        |
| See page 9      |                                 |            |                         |  |                 |                 |  |            |                        |    |                        |
| IRS             | Impact Roller Stand             | 105        | 1050                    |  |                 |                 |  |            |                        |    |                        |
| TRS             | Transition Stand                | 120        | 1200                    | <table border="1"> <thead> <tr> <th colspan="2">Bearing Type</th> </tr> </thead> <tbody> <tr> <td>02</td> <td>Ball Bearing Series 62</td> </tr> <tr> <td>03</td> <td>Ball Bearing Series 63</td> </tr> </tbody> </table> |                 | Bearing Type    |  | 02         | Ball Bearing Series 62 | 03 | Ball Bearing Series 63 |
| Bearing Type    |                                 |            |                         |  |                 |                 |  |            |                        |    |                        |
| 02              | Ball Bearing Series 62          |            |                         |  |                 |                 |  |            |                        |    |                        |
| 03              | Ball Bearing Series 63          |            |                         |  |                 |                 |  |            |                        |    |                        |
| RRS             | Return Roller Stand             | 140        | 1400                    |  |                 |                 |  |            |                        |    |                        |
| VRS             | V – Return Roller Stand         | 160        | 1600                    |  |                 |                 |  |            |                        |    |                        |
| SACR            | Self Aligning Carrie Roller     | 180        | 1800                    |  |                 |                 |  |            |                        |    |                        |
| SAVR            | Self Aligning Return Roller     | 200        | 2000                    |  |                 |                 |  |            |                        |    |                        |
| HP              | Self Aligning V – Return Roller | 220        | 2200                    |  |                 |                 |  |            |                        |    |                        |
| DP              | Head Pulley                     | 240        | 2400                    |  |                 |                 |  |            |                        |    |                        |
| TP              | Drive Pulley                    |            |                         |  |                 |                 |  |            |                        |    |                        |
| BP              | Tail Pulley                     |            |                         |  |                 |                 |  |            |                        |    |                        |
| SP              | Snub Pulley                     |            |                         |  |                 |                 |  |            |                        |    |                        |
| TUP             | Take-up Pulley                  |            |                         |  |                 |                 |  |            |                        |    |                        |



HEBEI JUMING  
CONVEYOR MACHINERY

| Type | Arrangement | Dimension |    |     |   |    | Type | Arrangement | Dimension |     |   |   |   |
|------|-------------|-----------|----|-----|---|----|------|-------------|-----------|-----|---|---|---|
|      |             | Ød        | B  | K   | C | W  |      |             | Ød        | B   | K | C | W |
| A1   |             | 20        | 11 | 8   | 3 | 14 | A5   |             | 20        | M8  | - | - |   |
|      |             | 25        |    |     |   | 18 |      |             | 25        | M10 | - | - |   |
|      |             | 30        |    |     |   | 22 |      |             | 30        | M12 | - | - |   |
|      |             | 35        | 15 | 11  | 4 | 25 |      |             | 35        | M12 | - | - |   |
|      |             | 40        |    |     |   | 31 |      |             | 40        | M14 | - | - |   |
|      |             | 50        |    |     |   | 42 |      |             | 50        | M16 | - | - |   |
| A2   |             | 20        | 11 | -   | - | 14 | A6   |             | 20        | -   | - | - |   |
|      |             | 25        |    |     |   | 18 |      |             | 25        | -   | - | - |   |
|      |             | 30        |    |     |   | 22 |      |             | 30        | -   | - | - |   |
|      |             | 35        | 15 |     |   | 25 |      |             | 35        | -   | - | - |   |
|      |             | 40        |    |     |   | 31 |      |             | 40        | -   | - | - |   |
|      |             | 50        |    |     |   | 42 |      |             | 50        | -   | - | - |   |
| A3   |             | 20        | 11 |     |   | 14 | A7   |             | 20        |     |   |   |   |
|      |             | 25        | 15 |     |   | 18 |      |             | 25        |     |   |   |   |
|      |             | 30        | 17 |     |   | 22 |      |             | 30        |     |   |   |   |
|      |             | 35        | 20 |     |   | 25 |      |             | 35        |     |   |   |   |
|      |             | 40        | 20 |     |   | 31 |      |             | 40        |     |   |   |   |
|      |             | 50        | 25 |     |   | 42 |      |             | 50        |     |   |   |   |
| A4   |             | 20        |    | M16 |   |    |      |             |           |     |   |   |   |
|      |             | 25        |    | M22 |   |    |      |             |           |     |   |   |   |
|      |             | 30        |    | M24 |   |    |      |             |           |     |   |   |   |
|      |             | 35        |    | M32 |   |    |      |             |           |     |   |   |   |
|      |             | 40        |    | M36 |   |    |      |             |           |     |   |   |   |
|      |             | 50        |    | M36 |   |    |      |             |           |     |   |   |   |

JIS STANDARD



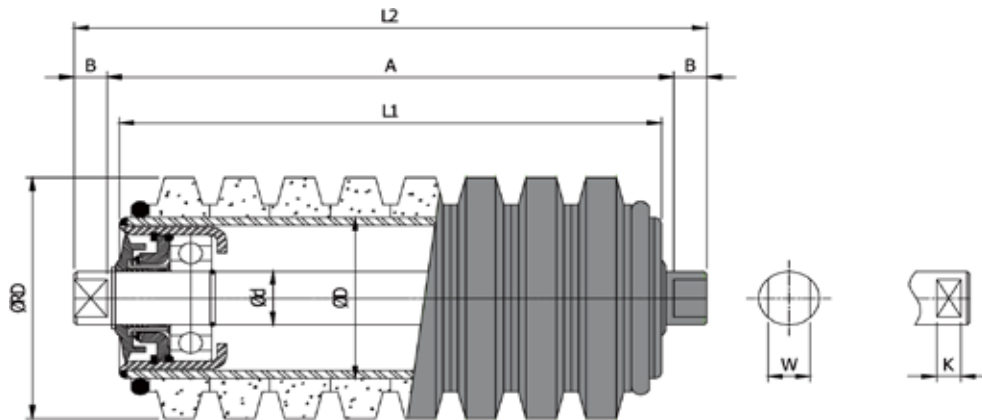
**JmRoller**

“

Juming Roller Can  
 Manufacture  
 JIS/DIN/CEMA Standard  
 (for more information  
 please visit  
[www.hbjuming.com](http://www.hbjuming.com))

”

| Belt Width | Type     | Dimension |     |     |     |     |    |    |    | Bearing  |
|------------|----------|-----------|-----|-----|-----|-----|----|----|----|----------|
|            |          | ØD        | Ød  | L1  | L2  | A   | K  | B  | W  |          |
| 400        | CR-400   | Ø 89.1    | Ø20 | 145 | 175 | 153 | 8  | 11 | 14 | 6204 2RS |
| 450        | CR-450   |           |     | 165 | 195 | 173 |    |    |    |          |
| 500        | CR-500   |           |     | 180 | 210 | 188 |    |    |    |          |
| 600        | CR-600-1 |           |     | 210 | 240 | 218 |    |    |    |          |
| 650        | CR-650   |           |     | 225 | 255 | 233 |    |    |    |          |
| 600        | CR-600-2 | Ø114.3    | Ø20 | 210 | 240 | 218 | 11 | 15 | 18 | 6205 2RS |
| 750        | CR-750   |           |     | 265 | 295 | 273 |    |    |    |          |
| 800        | CR-800   |           |     | 275 | 305 | 283 |    |    |    |          |
| 900        | CR-900   |           |     | 315 | 345 | 323 |    |    |    |          |
| 1000       | CR-1000  | Ø139.8    | Ø25 | 350 | 390 | 360 | 11 | 15 | 22 | 6206 2RS |
| 1050       | CR-1050  |           |     | 370 | 410 | 380 |    |    |    |          |
| 1200       | CR-1200  |           |     | 420 | 460 | 430 |    |    |    |          |
| 1400       | CR-1400  | Ø165.2    | Ø30 | 500 | 540 | 510 | 11 | 15 | 25 | 6207 2RS |
| 1600       | CR-1600  |           |     | 580 | 620 | 590 |    |    |    |          |
| 1800       | CR-1800  |           | Ø35 | 650 | 690 | 660 |    |    |    |          |
| 2000       | CR-2000  |           |     | 730 | 770 | 740 |    |    |    |          |
| 2200       | CR-2200  | Ø40       | Ø40 | 800 | 840 | 810 | 11 | 15 | 31 | 6208 2RS |
| 2400       | CR-2400  |           |     | 880 | 920 | 890 |    |    |    |          |



“

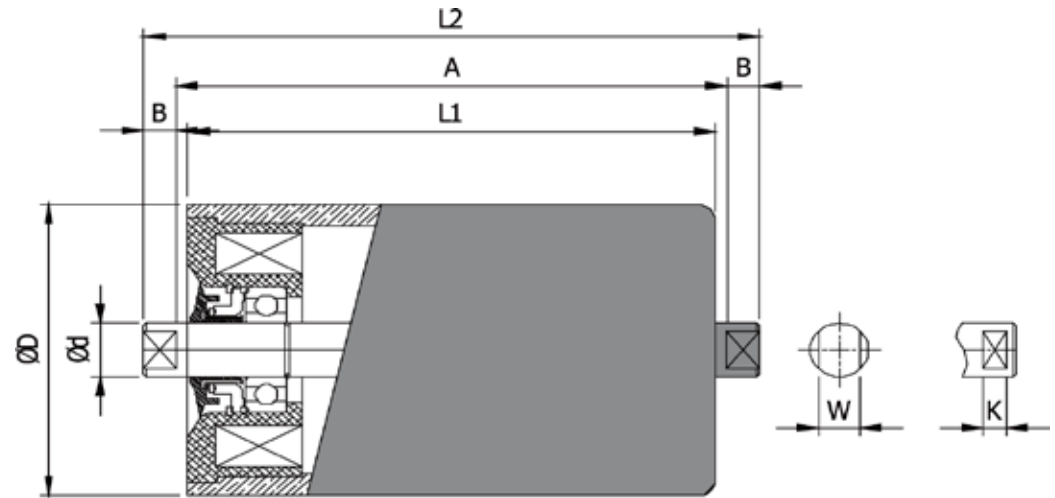
### JIS STANDARD

Juming Roller Can Manufacture JIS/DIN/CEMA Standard (for more information please visit [www.hbjuming.com](http://www.hbjuming.com))

”

| Belt Width | Type     | Dimension |         |      |     |     |     |    |    |    | Bearing  |
|------------|----------|-----------|---------|------|-----|-----|-----|----|----|----|----------|
|            |          | ØRD       | ØD      | Ød   | L1  | L2  | A   | K  | B  | W  |          |
| 400        | IR-400   | Ø 90      | Ø 60.3  | Ø 20 | 145 | 175 | 153 | 8  | 11 | 14 | 6204 2RS |
| 450        | IR-450   |           |         |      | 165 | 195 | 173 |    |    |    |          |
| 500        | IR-500   |           |         |      | 180 | 210 | 188 |    |    |    |          |
| 600        | IR-600-1 |           |         |      | 210 | 240 | 218 |    |    |    |          |
| 650        | IR-650   |           |         |      | 225 | 255 | 233 |    |    |    |          |
| 600        | IR-600-2 | Ø 115     | Ø 76.3  | Ø 20 | 210 | 240 | 218 | 8  | 11 | 14 | 6204 2RS |
| 750        | IR-750   |           |         |      | 265 | 295 | 273 |    |    |    |          |
| 800        | IR-800   |           |         |      | 275 | 305 | 283 |    |    |    |          |
| 900        | IR-900   |           |         |      | 315 | 345 | 323 |    |    |    |          |
| 1000       | IR-1000  |           |         |      | 350 | 390 | 360 |    |    |    |          |
| 1050       | IR-1050  | Ø 140     | Ø 89.1  | Ø 25 | 370 | 410 | 380 | 11 | 15 | 18 | 6205 2RS |
| 1200       | IR-1200  |           |         |      | 420 | 460 | 430 |    |    |    |          |
| 1400       | IR-1400  |           |         |      | 500 | 540 | 510 |    |    |    |          |
| 1600       | IR-1600  | Ø 166     | Ø 114.3 | Ø 30 | 580 | 620 | 590 | 11 | 15 | 22 | 6206 2RS |
| 1800       | IR-1800  |           |         |      | 650 | 690 | 660 |    |    |    |          |
| 2000       | IR-2000  |           |         | Ø 35 | 730 | 770 | 740 |    |    |    |          |
| 2200       | IR-2200  |           |         |      | 800 | 840 | 810 |    |    |    |          |
| 2400       | IR-2400  |           |         |      | 880 | 920 | 890 |    |    |    |          |

JIS STANDARD



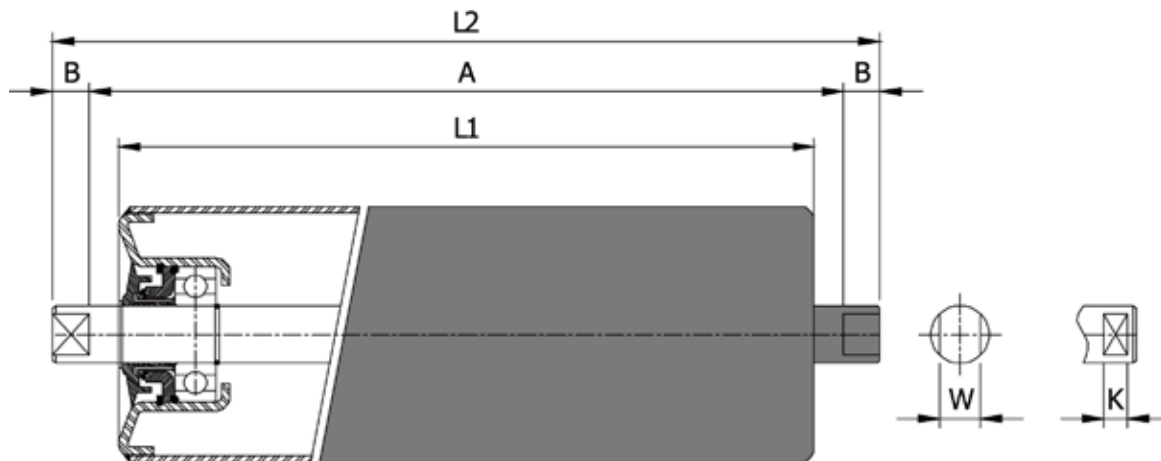
**JmRoller**

“

Juming Roller Can  
Manufacture  
JIS/DIN/CEMA Standard  
(for more information  
please visit  
[www.hbjuming.com](http://www.hbjuming.com))

”

| Belt Width | Dimension |     |          |          |     |          | HDPE CARRIER ROLLER |          |      |      | HDPE RETURN ROLLER |      |      |      |
|------------|-----------|-----|----------|----------|-----|----------|---------------------|----------|------|------|--------------------|------|------|------|
|            | ØD        | Ød  | K        | B        | W   | Bearing  | Type                | 1L       | L2   | A    | Type               | L1   | L2   | A    |
| 400        | Ø 90      | Ø20 | 8        | 12.5     | 14  | 6204 2RS | PEC-400             | 145      | 175  | 153  | PER-400            | 460  | 505  | 480  |
| 450        |           |     |          |          |     |          | PEC-450             | 165      | 195  | 173  | PER-450            | 510  | 555  | 530  |
| 500        |           |     |          |          |     |          | PEC-500             | 180      | 210  | 188  | PER-500            | 560  | 605  | 580  |
| 600        |           |     |          |          |     |          | PEC-600-1           | 210      | 240  | 218  | PER-600-1          | 660  | 705  | 680  |
| 650        |           |     |          |          |     |          | PEC-650             | 225      | 255  | 233  | PER-650            | 710  | 755  | 730  |
| 600        | Ø 110     | Ø20 | 8        | 12.5     | 14  | 6204 2RS | PEC-600-2           | 210      | 240  | 218  | PER-600-2          | 660  | 705  | 680  |
| 750        |           |     |          |          |     |          | PEC-750             | 265      | 295  | 273  | PER-750            | 850  | 905  | 880  |
| 800        |           |     |          |          |     |          | PEC-800             | 275      | 305  | 283  | PER-800            | 900  | 955  | 930  |
| 900        | Ø 125     | Ø20 | 8        | 12.5     | 14  | 6204 2RS | PEC-900             | 315      | 345  | 323  | PER-900            | 1000 | 1055 | 1030 |
| 1000       |           |     |          |          |     |          | PEC-1000            | 350      | 390  | 360  | PER-1000           | 1100 | 1162 | 1140 |
| 1050       |           |     |          |          |     |          | PEC-1050            | 370      | 410  | 380  | PER-1050           | 1150 | 1212 | 1180 |
| 1200       | Ø 140     | Ø25 | 11       | 16       | 18  | 6205 2RS | PEC-1200            | 420      | 460  | 430  | PER-1200           | 1300 | 1362 | 1330 |
| 1400       |           |     |          |          |     |          | PEC-1400            | 500      | 540  | 510  | PER-1400           | 1510 | 1585 | 1550 |
| 1600       | Ø 160     | Ø30 | 11       | 17.5     | 22  | 6206 2RS | PEC-1600            | 580      | 620  | 590  | PER-1600           | 1710 | 1785 | 1750 |
| 1800       |           |     |          |          |     |          | PEC-1800            | 650      | 690  | 660  | PER-1800           | 2000 | 2075 | 2040 |
| 2000       |           | Ø35 |          |          | 25  | 6207 2RS | PEC-2000            | 730      | 770  | 740  | PER-2000           | 2200 | 2275 | 2240 |
| 2200       |           |     |          |          |     |          | PEC-2200            | 800      | 840  | 810  | PER-2200           | 2400 | 2475 | 2440 |
| 2400       |           |     |          |          |     |          | PEC-2400            | 880      | 920  | 890  | PER-2400           | 2600 | 2675 | 2640 |
| 2200       | Ø40       | 31  | 6308 2RS | PEC-2200 | 800 | 840      | 810                 | PER-2200 | 2400 | 2475 | 2440               |      |      |      |
| 2400       |           |     |          | PEC-2400 | 880 | 920      | 890                 | PER-2400 | 2600 | 2675 | 2640               |      |      |      |



“

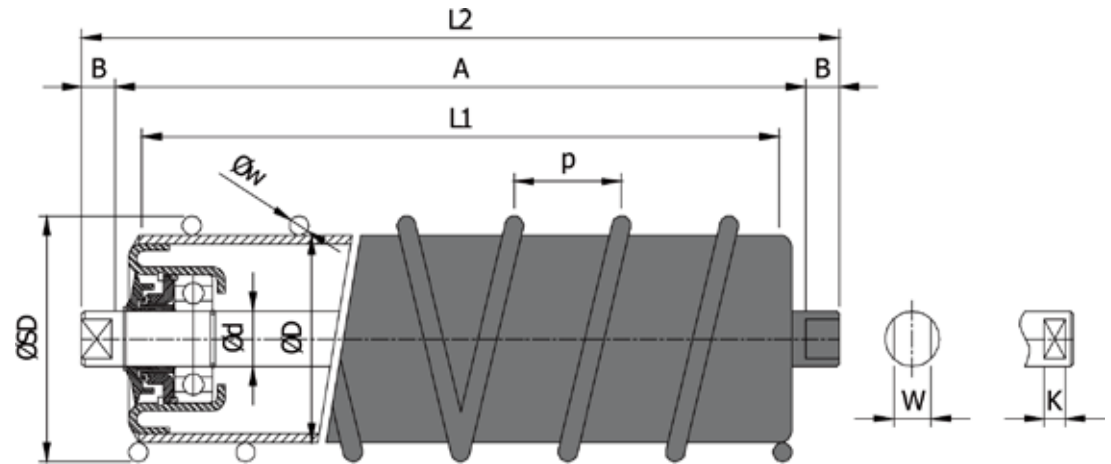
### JIS STANDARD

Juming Roller Can Manufacture JIS/DIN/CEMA Standard (for more information please visit [www.hbjuming.com](http://www.hbjuming.com))

”

| Belt Width | Dimension |     |    |      |    |          | RETURN ROLLER |      |      |      | V- RETURN ROLLER |      |      |      |
|------------|-----------|-----|----|------|----|----------|---------------|------|------|------|------------------|------|------|------|
|            | ØD        | Ød  | K  | B    | W  | Bearing  | Type          | L1   | L2   | A    | Type             | L1   | L2   | A    |
| 400        | Ø 89.1    | Ø20 | 8  | 12.5 | 14 | 6204 2RS | RR-400        | 460  | 505  | 480  | VR-400           | 220  | 250  | 228  |
| 450        |           |     |    |      |    |          | RR-450        | 510  | 555  | 530  | VR-450           | 245  | 275  | 253  |
| 500        |           |     |    |      |    |          | RR-500        | 560  | 605  | 580  | VR-500           | 270  | 300  | 278  |
| 600        |           |     |    |      |    |          | RR-600-1      | 660  | 705  | 680  | VR-600-1         | 320  | 350  | 328  |
| 650        |           |     |    |      |    |          | RR-650        | 710  | 755  | 730  | VR-650           | 365  | 395  | 373  |
| 600        | Ø114.3    |     |    |      |    |          | RR-600-2      | 660  | 705  | 680  | VR-600-2         | 320  | 350  | 328  |
| 750        |           |     |    |      |    |          | RR-750        | 850  | 905  | 880  | VR-750           | 415  | 445  | 423  |
| 800        |           |     |    |      |    |          | RR-800        | 900  | 955  | 930  | VR-800           | 440  | 475  | 448  |
| 900        |           |     |    |      |    |          | RR-900        | 1000 | 1055 | 1030 | VR-900           | 490  | 520  | 498  |
| 1000       |           |     |    |      |    |          | RR-1000       | 1100 | 1162 | 1140 | VR-1000          | 540  | 580  | 550  |
| 1050       | Ø139.8    | Ø25 | 11 | 16   | 18 | 6205 2RS | RR-1050       | 1150 | 1212 | 1180 | VR-1050          | 565  | 605  | 575  |
| 1200       |           |     |    |      |    |          | RR-1200       | 1300 | 1362 | 1330 | VR-1200          | 640  | 680  | 650  |
| 1400       |           |     |    |      |    |          | RR-1400       | 1510 | 1585 | 1550 | VR-1400          | 750  | 790  | 760  |
| 1600       | Ø165.2    | Ø30 |    |      | 22 | 6206 2RS | RR-1600       | 1710 | 1785 | 1750 | VR-1600          | 850  | 890  | 860  |
| 1800       |           |     |    |      |    |          | RR-1800       | 2000 | 2075 | 2040 | VR-1800          | 980  | 1020 | 990  |
| 2000       |           |     |    |      |    |          | RR-2000       | 2200 | 2275 | 2240 | VR-2000          | 1080 | 1120 | 1090 |
| 2200       |           |     |    |      |    |          | RR-2200       | 2400 | 2475 | 2440 | VR-2200          | 1180 | 1220 | 1190 |
| 2400       |           |     |    |      |    |          | RR-2400       | 2600 | 2675 | 2640 | VR-2400          | 1280 | 1320 | 1290 |
|            |           | Ø35 |    | 17.5 | 25 | 6207 2RS |               |      |      |      |                  |      |      |      |
|            |           | Ø40 |    |      | 31 | 6308 2RS |               |      |      |      |                  |      |      |      |

JIS STANDARD



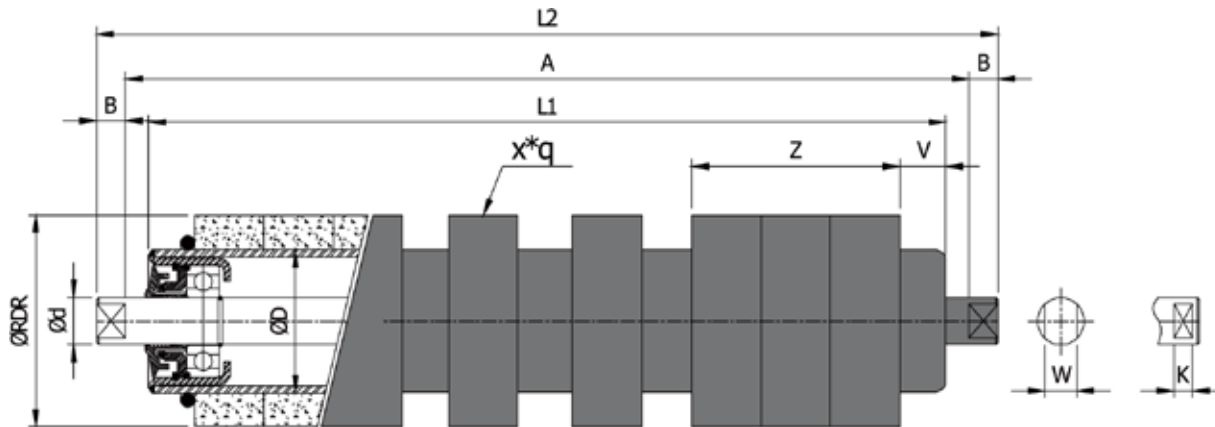
**JmRoller**

“

Juming Roller Can  
Manufacture  
JIS/DIN/CEMA Standard  
(for more information  
please visit  
[www.hbjuming.com](http://www.hbjuming.com))

”

| Belt Width | Type      | Dimension |        |      |      |    |          |      |      |    |      |    | Bearing  |
|------------|-----------|-----------|--------|------|------|----|----------|------|------|----|------|----|----------|
|            |           | ØSD       | ØD     | Ød   | Øw   | p  | L1       | L2   | A    | K  | B    | W  |          |
| 400        | SRR-400   | Ø 90.3    | Ø 76.3 | Ø 20 | 7    | 40 | 460      | 505  | 480  | 8  | 12.5 | 14 | 6204 2RS |
| 450        | SRR-450   |           |        |      |      |    | 510      | 555  | 530  |    |      |    |          |
| 500        | SRR-500   |           |        |      |      |    | 560      | 605  | 580  |    |      |    |          |
| 600        | SRR-600-1 |           |        |      |      |    | 660      | 705  | 680  |    |      |    |          |
| 650        | SRR-650   |           |        |      |      |    | 710      | 755  | 730  |    |      |    |          |
| 600        | SRR-600-2 | Ø115.1    | Ø 89.1 | Ø 20 | 13   | 50 | 660      | 705  | 680  | 11 | 16   | 18 | 6205 2RS |
| 750        | SRR-750   |           |        |      |      |    | 850      | 905  | 880  |    |      |    |          |
| 800        | SRR-800   |           |        |      |      |    | 900      | 955  | 930  |    |      |    |          |
| 900        | SRR-900   | Ø140.3    | Ø114.3 | Ø 25 | 13   | 60 | 1000     | 1055 | 1030 | 11 | 16   | 18 | 6205 2RS |
| 1000       | SRR-1000  |           |        |      |      |    | 1100     | 1162 | 1140 |    |      |    |          |
| 1050       | SRR-1050  |           |        |      |      |    | 1150     | 1212 | 1180 |    |      |    |          |
| 1200       | SRR-1200  | Ø165.8    | Ø139.8 | Ø 30 | 13   | 65 | 1300     | 1362 | 1330 | 11 | 17.5 | 22 | 6206 2RS |
| 1400       | SRR-1400  |           |        |      |      |    | 1510     | 1585 | 1550 |    |      |    |          |
| 1600       | SRR-1600  |           |        |      |      |    | 1710     | 1785 | 1750 |    |      |    |          |
| 1800       | SRR-1800  |           |        |      |      |    | 2000     | 2075 | 2040 |    |      |    |          |
| 2000       | SRR-2000  |           |        |      |      |    | 2200     | 2275 | 2240 |    |      |    |          |
| 2200       | SRR-2200  |           |        |      |      |    | 2400     | 2475 | 2440 |    |      |    |          |
| 2400       | SRR-2400  | 2600      | 2675   | 2640 | Ø 40 | 31 | 6308 2RS |      |      |    |      |    |          |



### JIS STANDARD

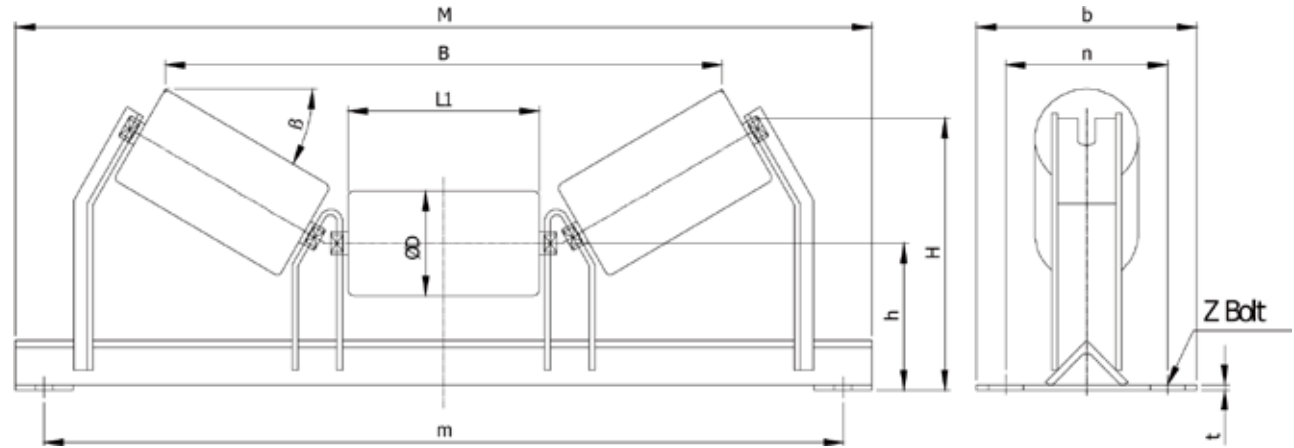
“

Juming Roller Can Manufacture JIS/DIN/CEMA Standard (for more information please visit [www.hbjuming.com](http://www.hbjuming.com))

”

| Belt Width | Type      | Dimension |        |     |     |      |      |      |     |      |      |      |      |
|------------|-----------|-----------|--------|-----|-----|------|------|------|-----|------|------|------|------|
|            |           | ØRDR      | ØD     | Ød  | V   | Z    | L1   | L2   | A   | K    | B    | W    | X*q  |
| 400        | RDR-400   | Ø90       | Ø60.3  | Ø20 | 20  | 90   | 460  | 505  | 480 | 8    | 12.5 | 14   | 30*2 |
| 450        | RDR-450   |           |        |     |     |      | 510  | 555  | 530 |      |      |      | 30*3 |
| 500        | RDR-500   |           |        |     |     |      | 560  | 605  | 580 |      |      |      | 30*3 |
| 600        | RDR-600-1 |           |        |     |     |      | 660  | 705  | 680 |      |      |      | 30*4 |
| 650        | RDR-650   |           |        |     |     |      | 710  | 755  | 730 |      |      |      | 30*5 |
| 600        | RDR-600-2 | Ø115      | Ø76.3  | 25  | 120 | 660  | 705  | 680  | 11  | 16   | 18   | 30*3 |      |
| 750        | RDR-750   |           |        |     |     | 850  | 905  | 880  |     |      |      | 30*5 |      |
| 800        | RDR-800   |           |        |     |     | 900  | 955  | 930  |     |      |      | 30*5 |      |
| 900        | RDR-900   |           |        |     |     | 1000 | 1055 | 1030 |     |      |      | 30*6 |      |
| 1000       | RDR-1000  | Ø140      | Ø89.1  | 25  | 160 | 1100 | 1162 | 1140 | 11  | 17.5 | 22   | 30*5 |      |
| 1050       | RDR-1050  |           |        |     |     | 1150 | 1212 | 1180 |     |      |      | 30*5 |      |
| 1200       | RDR-1200  |           |        |     |     | 1300 | 1362 | 1330 |     |      |      | 30*6 |      |
| 1400       | RDR-1400  | Ø166      | Ø114.3 | 25  | 200 | 1510 | 1585 | 1550 | 11  | 17.5 | 25   | 30*5 |      |
| 1600       | RDR-1600  |           |        |     |     | 1710 | 1785 | 1750 |     |      |      | 30*5 |      |
| 1800       | RDR-1800  |           |        |     |     | 2000 | 2075 | 2040 |     |      |      | 30*6 |      |
| 2000       | RDR-2000  |           |        |     |     | 2200 | 2275 | 2240 |     |      |      | 30*7 |      |
| 2200       | RDR-2200  |           |        |     |     | 2400 | 2475 | 2440 |     |      |      | 30*8 |      |
| 2400       | RDR-2400  |           |        |     |     | 2600 | 2675 | 2640 |     |      |      | 30*9 |      |

JIS STANDARD



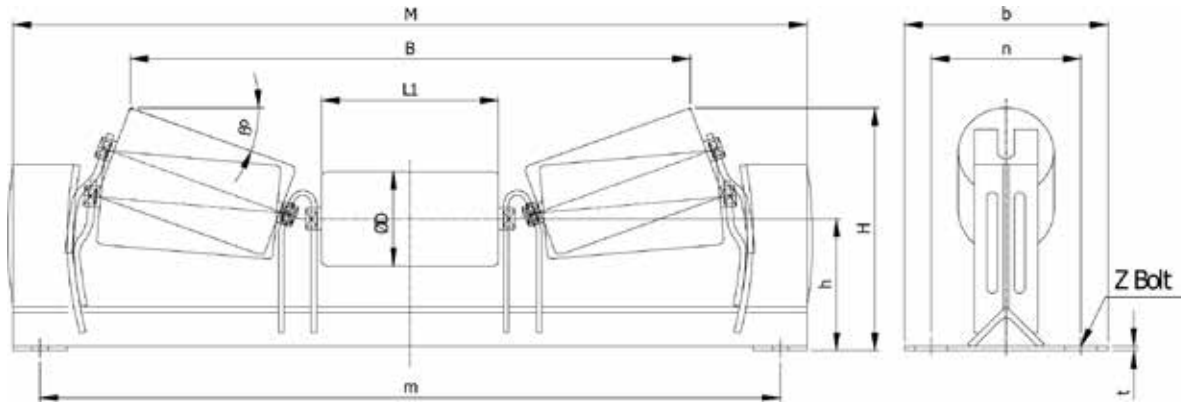
**JM Roller**

“

produces retractable for impact roller stand

”

| Belt Width | Type      | Dimension |      |      |      |     |      |     |      |      |       |      |      |      |       |      |      |      |        |     |      |     |       |     |  |  |       |
|------------|-----------|-----------|------|------|------|-----|------|-----|------|------|-------|------|------|------|-------|------|------|------|--------|-----|------|-----|-------|-----|--|--|-------|
|            |           | ØD        | L1   | m    | M    | h   | n    | b   | t    | Z    | β=20° |      |      |      | β=30° |      |      |      | β=35°  |     |      |     | β=45° |     |  |  | Angle |
|            |           |           |      |      |      |     |      |     |      |      | B     | H    | B    | H    | B     | H    | B    | H    | B      | H   | B    | H   |       |     |  |  |       |
| 400        | CRS-400   | 89.1      | 145  | 640  | 690  | 125 | 140  | 190 | 6    | M12  | 465   | 223  | 426  | 246  | -     | -    | -    | -    | L50xt6 |     |      |     |       |     |  |  |       |
| 450        | CRS-450   |           | 522  | 230  | 481  |     |      |     |      |      | 256   | -    | -    | -    | -     |      |      |      |        |     |      |     |       |     |  |  |       |
| 500        | CRS-500   |           | 565  | 235  | 522  |     |      |     |      |      | 264   | -    | -    | -    | -     |      |      |      |        |     |      |     |       |     |  |  |       |
| 600        | CRS-600-1 | 114.3     | 210  | 840  | 890  | 140 | 150  | 200 | 6    | M12  | 652   | 261  | 604  | 294  | -     | -    | -    | -    | L60xt6 |     |      |     |       |     |  |  |       |
| 650        | CRS-650   |           | 695  | 266  | 640  |     |      |     |      |      | 302   | -    | -    | -    | -     |      |      |      |        |     |      |     |       |     |  |  |       |
| 600        | CRS-600-2 |           | 210  | 840  | 890  |     |      |     |      |      | 150   | 160  | 210  | 6    | M12   | 643  | 282  | 610  |        | 317 | 589  | 333 | 546   | 364 |  |  |       |
| 750        | CRS-750   | 265       | 1040 | 1090 | 802  | 301 | 760  | 344 | 734  | 365  |       |      |      |      |       | 678  | 403  |      |        |     |      |     |       |     |  |  |       |
| 800        | CRS-800   | 275       | 1090 | 1140 | 830  | 304 | 787  | 349 | 760  | 370  |       |      |      |      |       | 702  | 410  |      |        |     |      |     |       |     |  |  |       |
| 900        | CRS-900   | 139.8     | 315  | 1190 | 1240 | 180 | 180  | 230 | 6    | M12  | 946   | 318  | 897  | 369  | 866   | 393  | 799  | 438  | L75xt6 |     |      |     |       |     |  |  |       |
| 1000       | CRS-1000  |           | 350  | 1290 | 1340 |     |      |     |      |      | 1057  | 374  | 998  | 431  | 961   | 456  | 882  | 504  |        |     |      |     |       |     |  |  |       |
| 1050       | CRS-1050  |           | 370  | 1340 | 1390 |     |      |     |      |      | 1115  | 381  | 1053 | 441  | 1014  | 468  | 931  | 519  |        |     |      |     |       |     |  |  |       |
| 1200       | CRS-1200  | 165.2     | 420  | 1490 | 1540 | 180 | 180  | 230 | 6    | M12  | 1295  | 398  | 1190 | 466  | 1146  | 497  | 1052 | 555  | L90xt8 |     |      |     |       |     |  |  |       |
| 1400       | CRS-1400  |           | 500  | 1730 | 1790 |     |      |     |      |      | 250   | 280  | 340  | 9    | M16   | 1490 | 508  | 1414 |        | 589 | 1370 | 627 | 1261  | 697 |  |  |       |
| 1600       | CRS-1600  |           | 580  | 1930 | 1990 |     |      |     |      |      |       |      |      |      |       | 1720 | 535  | 1633 |        | 629 | 1581 | 673 | 1454  | 754 |  |  |       |
| 1800       | CRS-1800  | 650       | 2220 | 2280 | 280  | 330 | 390  | 9   | M16  | 1922 |       |      |      |      |       | 589  | 1824 | 694  | 1766   | 743 | 1623 | 833 |       |     |  |  |       |
| 2000       | CRS-2000  | 730       | 2420 | 2480 |      |     |      |     |      | 2152 | 617   | 2042 | 734  | 1977 | 789   | 1816 | 890  |      |        |     |      |     |       |     |  |  |       |
| 2200       | CRS-2200  | 800       | 2620 | 2680 |      |     |      |     |      | 300  | 330   | 390  | 12   | M20  | -     | -    | 2234 | 789  | 2161   | 849 | 1985 | 959 |       |     |  |  |       |
| 2400       | CRS-2400  | 880       | 2820 | 2880 | -    | -   | 2452 | 829 | 2372 |      |       |      |      |      | 895   | 2178 | 1016 |      |        |     |      |     |       |     |  |  |       |

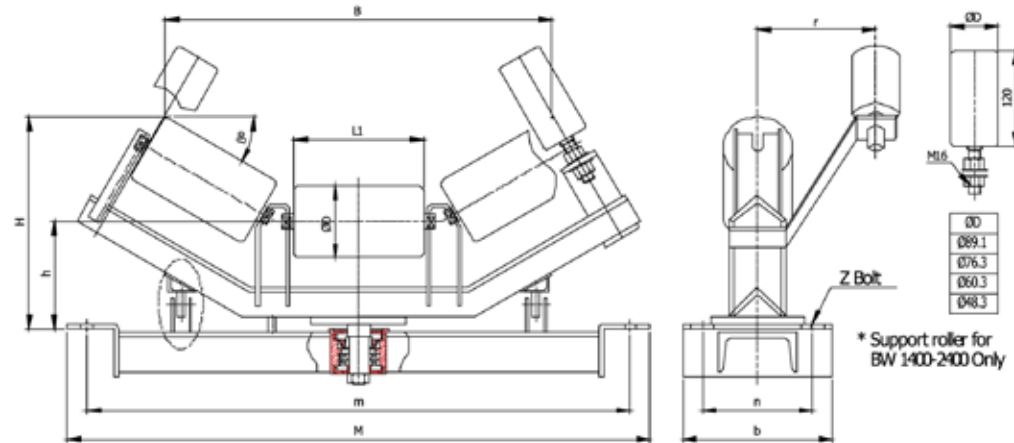


05° ~ 20°  
05° ~ 30°

| Belt Width | Type      | Dimension |      |      |      |     |      |     |      |      |          |       |     |       |     |      |        |         |      |     |      |        |
|------------|-----------|-----------|------|------|------|-----|------|-----|------|------|----------|-------|-----|-------|-----|------|--------|---------|------|-----|------|--------|
|            |           | ØD        | L1   | m    | M    | h   | n    | b   | t    | β=5° |          | β=20° |     | β=30° |     | Z    | Angle  |         |      |     |      |        |
|            |           |           |      |      |      |     |      |     |      | B    | H        | B     | H   | B     | H   |      |        |         |      |     |      |        |
| 400        | TRS-400   | Ø 89.1    | 145  | 640  | 690  | 125 | 140  | 190 | 6    | 506  | 184      | 465   | 223 | 426   | 246 | M12  | L50xt6 |         |      |     |      |        |
| 450        | TRS-450   |           | 165  | 690  | 740  |     |      |     |      | 566  | 186      | 522   | 230 | 481   | 256 |      |        |         |      |     |      |        |
| 500        | TRS-500   |           | 180  | 740  | 790  |     |      |     |      | 611  | 187      | 565   | 235 | 522   | 264 |      |        |         |      |     |      |        |
| 600        | TRS-600-1 | 210       | 840  | 890  | 700  | 204 | 652  | 261 | 604  | 294  | L60xt6   |       |     |       |     |      |        |         |      |     |      |        |
| 650        | TRS-650   | 225       | 890  | 940  |      |     |      |     |      |      |          | 150   | 200 | 6     | 744 |      | 205    | 695     | 266  | 640 | 302  |        |
| 600        | TRS-600-2 | 210       | 840  | 890  |      |     |      |     |      |      |          |       |     |       | 160 |      | 210    | 6       | 698  | 227 | 643  | 282    |
| 750        | TRS-750   | 265       | 1040 | 1090 | 180  | 180 | 230  | 6   | 863  | 232  |          |       |     |       |     | 802  |        |         | 301  | 760 | 344  | L75xt6 |
| 800        | TRS-800   | 275       | 1090 | 1140 |      |     |      |     | 874  | 251  |          | 830   | 304 | 787   |     | 349  |        |         |      |     |      |        |
| 900        | TRS-900   | 315       | 1190 | 1240 |      |     |      |     | 1012 | 236  |          | 946   | 318 | 897   | 369 |      |        |         |      |     |      |        |
| 1000       | TRS-1000  | Ø139.8    | 350  | 1290 | 1340 | 250 | 280  | 340 | 9    | 1135 | 282      | 1057  | 374 | 998   | 431 | M16  | L90xt8 |         |      |     |      |        |
| 1050       | TRS-1050  |           | 370  | 1340 | 1390 |     |      |     |      | 1195 | 284      | 1115  | 381 | 1053  | 441 |      |        |         |      |     |      |        |
| 1200       | TRS-1200  |           | 420  | 1490 | 1540 |     |      |     |      | 1344 | 288      | 1259  | 398 | 1190  | 466 |      |        |         |      |     |      |        |
| 1400       | TRS-1400  | Ø165.2    | 500  | 1730 | 1790 | 280 | 330  | 390 | 9    | 1592 | 378      | 1490  | 508 | 1414  | 589 |      | M20    | L100xt9 |      |     |      |        |
| 1600       | TRS-1600  |           | 580  | 1930 | 1990 |     |      |     |      | 1831 | 385      | 1720  | 535 | 1633  | 629 |      |        |         |      |     |      |        |
| 1800       | TRS-1800  |           | 650  | 2220 | 2280 |     |      |     |      | 2040 | 421      | 1922  | 589 | 1824  | 694 |      |        |         |      |     |      |        |
| 2000       | TRS-2000  | 730       | 2420 | 2480 | 2489 | 454 | 2210 | 667 | 2234 | 789  | L130xt12 |       |     |       |     |      |        |         |      |     |      |        |
| 2200       | TRS-2200  | 800       | 2620 | 2680 |      |     |      |     |      |      |          | 300   | 330 | 390   | 12  | 2489 |        | 454     | 2210 | 667 | 2234 | 789    |
| 2400       | TRS-2400  | 880       | 2820 | 2880 |      |     |      |     |      |      |          |       |     |       |     | 2729 |        | 461     | 2430 | 795 | 2452 | 829    |

## JIS STANDARD

\* Support roller for  
BW 1400-2400 Only



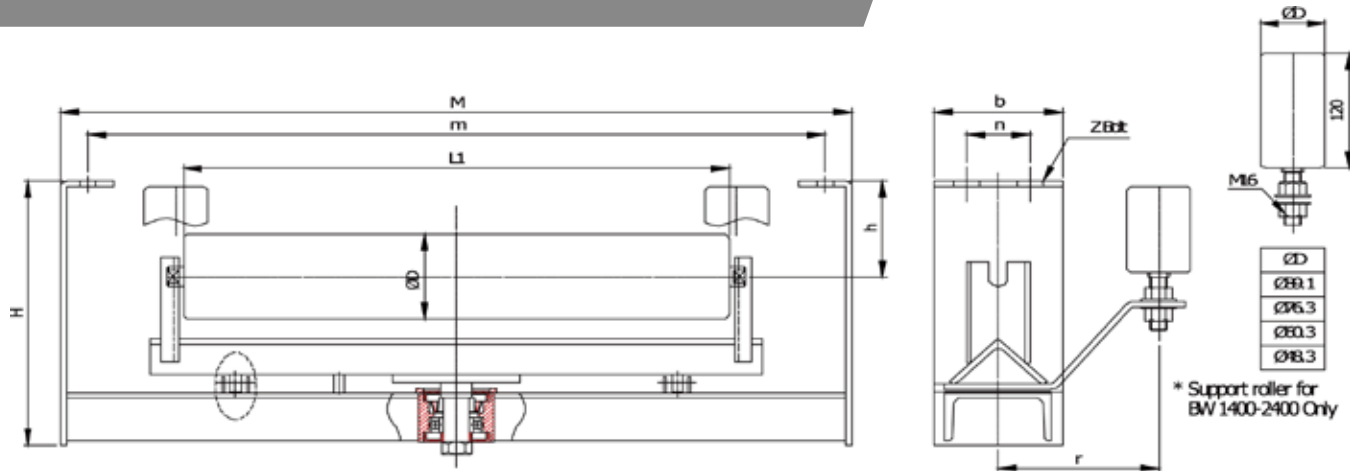
# JM Roller

“

Z Bolt :  
M12 for BW 400-1200  
M16 for BW 1400 2000  
M20 for BW 2200-2400

”

| Belt Width | Type       | ØD    | L1  | m    | M    | h   | n   | b   | t | r   | Dimension |     |       |     |       |     |       |      | Channel  |
|------------|------------|-------|-----|------|------|-----|-----|-----|---|-----|-----------|-----|-------|-----|-------|-----|-------|------|----------|
|            |            |       |     |      |      |     |     |     |   |     | β=20°     |     | β=30° |     | β=35° |     | β=45° |      |          |
|            |            |       |     |      |      |     |     |     |   |     | B         | H   | B     | H   | B     | H   | B     | H    |          |
| 400        | SACR-400   | 89.1  | 145 | 640  | 690  | 135 | 140 | 190 | 6 | 150 | 535       | 321 | 465   | 349 | -     | -   | -     | -    | 100x50x5 |
| 450        | SACR-450   |       | 165 | 690  | 740  |     |     |     |   |     | 583       | 326 | 511   | 356 | -     | -   | -     | -    |          |
| 500        | SACR-500   |       | 180 | 740  | 790  |     |     |     |   |     | 636       | 333 | 561   | 366 | -     | -   | -     | -    |          |
| 600        | SACR-600-1 |       | 210 | 840  | 890  |     |     |     |   |     | 731       | 360 | 651   | 399 | -     | -   | -     | -    |          |
| 650        | SACR-650   | 114.3 | 225 | 890  | 940  | 150 | 150 | 200 | 6 | 180 | 774       | 365 | 692   | 406 | -     | -   | -     | -    |          |
| 600        | SACR-600-2 |       | 210 | 840  | 890  |     |     |     |   |     | 741       | 386 | 664   | 427 | 625   | 445 | 546   | 477  |          |
| 750        | SACR-750   |       | 265 | 1040 | 1090 |     |     |     |   |     | 870       | 401 | 797   | 449 | 754   | 470 | 665   | 523  |          |
| 800        | SACR-800   |       | 275 | 1090 | 1140 |     |     |     |   |     | 898       | 404 | 824   | 454 | 770   | 475 | 689   | 530  |          |
| 900        | SACR-900   | 139.8 | 315 | 1190 | 1240 | 160 | 160 | 210 | 6 | 180 | 1014      | 418 | 933   | 474 | 885   | 499 | 785   | 544  |          |
| 1000       | SACR-1000  |       | 350 | 1290 | 1340 |     |     |     |   |     | 1137      | 473 | 1045  | 535 | 992   | 563 | 880   | 613  |          |
| 1050       | SACR-1050  |       | 370 | 1340 | 1390 |     |     |     |   |     | 1195      | 480 | 1100  | 545 | 1045  | 575 | 928   | 527  |          |
| 1200       | SACR-1200  |       | 420 | 1490 | 1540 |     |     |     |   |     | 1339      | 497 | 1237  | 570 | 1177  | 603 | 1049  | 662  |          |
| 1400       | SACR-1400  | 165.2 | 500 | 1730 | 1790 | 190 | 180 | 230 | 6 | 250 | 1515      | 594 | 1413  | 676 | 1355  | 714 | 1220  | 782  |          |
| 1600       | SACR-1600  |       | 580 | 1930 | 1990 |     |     |     |   |     | 1718      | 617 | 1605  | 709 | 1542  | 752 | 1392  | 828  |          |
| 1800       | SACR-1800  |       | 650 | 2220 | 2280 |     |     |     |   |     | 1910      | 669 | 1788  | 771 | 1718  | 819 | 1553  | 904  |          |
| 2000       | SACR-2000  |       | 730 | 2420 | 2480 |     |     |     |   |     | 2103      | 689 | 1972  | 801 | 1896  | 853 | 1718  | 946  |          |
| 2200       | SACR-2200  | 165.2 | 800 | 2620 | 2680 | 290 | 330 | 390 | 9 | 250 | -         | -   | 2163  | 856 | 2081  | 914 | 1887  | 1016 |          |
| 2400       | SACR-2400  |       | 880 | 2820 | 2880 |     |     |     |   |     | -         | -   | 2382  | 896 | 2292  | 960 | 2080  | 1072 |          |



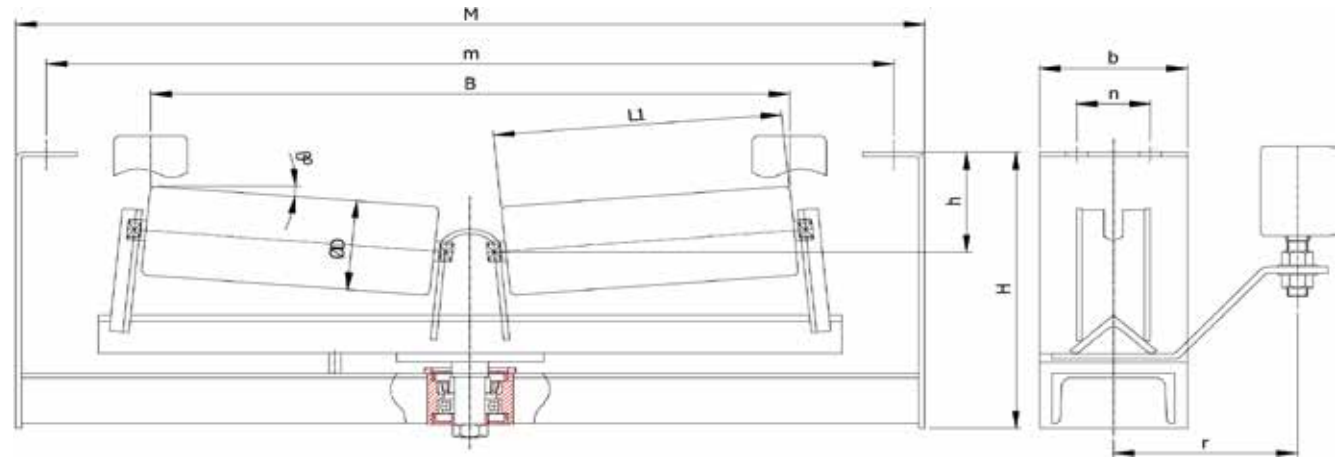
\* Support roller for  
BW 1400-2400 Only

\* Support roller for  
BW 1400-2400 Only

| Belt Width | Type       | Dimension |      |      |      |     |     |     |   |     |     | z   | Channel  |     |          |
|------------|------------|-----------|------|------|------|-----|-----|-----|---|-----|-----|-----|----------|-----|----------|
|            |            | ØD        | L1   | m    | M    | h   | n   | b   | t | r   | H   |     |          |     |          |
| 400        | SARR-400   | Ø89.1     | 460  | 640  | 690  | 100 | 60  | 120 | 6 | 150 | 290 | M12 | 100x50x5 |     |          |
| 450        | SARR-450   |           | 510  | 690  | 740  |     |     |     |   |     |     |     |          |     |          |
| 500        | SARR-500   |           | 560  | 740  | 790  |     |     |     |   |     |     |     |          |     |          |
| 600        | SARR-600-1 |           | 660  | 840  | 890  |     |     |     |   |     |     |     |          |     |          |
| 650        | SARR-650   |           | 710  | 890  | 940  |     |     |     |   |     |     |     |          |     |          |
| 600        | SARR-600-2 | Ø114.3    | 660  | 840  | 890  | 100 | 60  | 120 | 6 | 180 | 305 |     |          | M16 | 150x75x6 |
| 750        | SARR-750   |           | 850  | 1040 | 1090 |     |     |     |   |     |     |     |          |     |          |
| 800        | SARR-800   |           | 900  | 1090 | 1140 |     |     |     |   |     |     |     |          |     |          |
| 900        | SARR-900   |           | 1000 | 1190 | 1240 |     |     |     |   |     |     |     |          |     |          |
| 1000       | SARR-1000  |           | 1100 | 1290 | 1340 |     |     |     |   |     |     |     |          |     |          |
| 1050       | SARR-1050  | Ø139.8    | 1150 | 1340 | 1390 | 120 | 100 | 170 | 6 | 180 | 380 | M16 | 200x80x7 |     |          |
| 1200       | SARR-1200  |           | 1300 | 1490 | 1540 |     |     |     |   |     |     |     |          |     |          |
| 1400       | SARR-1400  |           | 1510 | 1730 | 1790 |     |     |     |   |     |     |     |          |     |          |
| 1600       | SARR-1600  | Ø165.2    | 1710 | 1930 | 1990 | 160 | 120 | 200 | 6 | 250 | 530 | M20 | 200x80x7 |     |          |
| 1800       | SARR-1800  |           | 2000 | 2220 | 2280 |     |     |     |   |     |     |     |          |     |          |
| 2000       | SARR-2000  |           | 2200 | 2420 | 2480 |     |     |     |   |     |     |     |          |     |          |
| 2200       | SARR-2200  |           | 2400 | 2620 | 2680 |     |     |     |   |     |     |     |          |     |          |
| 2400       | SARR-2400  |           | 2600 | 2820 | 2880 |     |     |     |   |     |     |     |          |     |          |

JIS STANDARD

05°



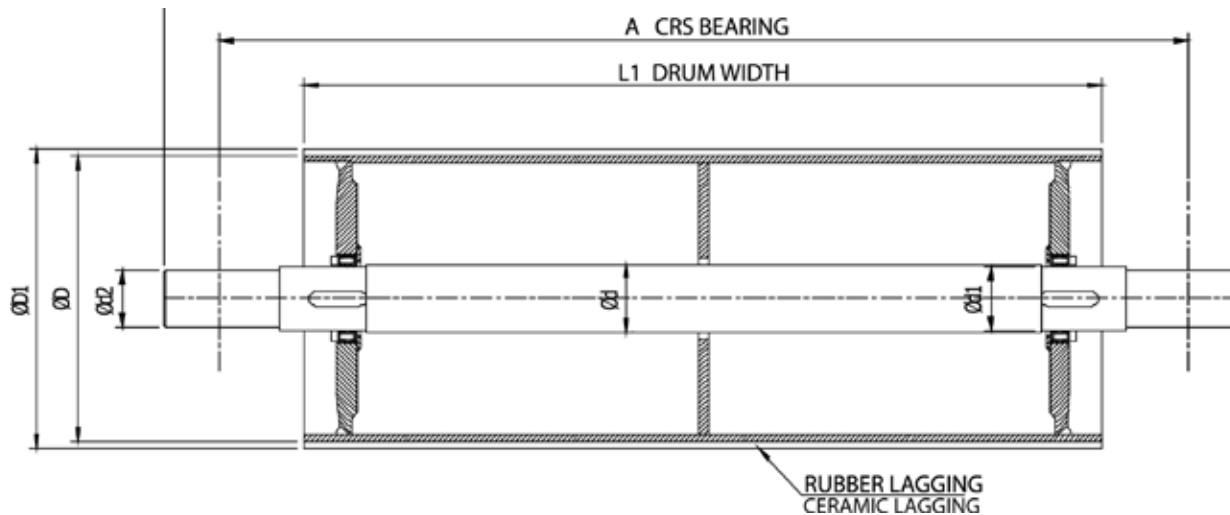
**JM Roller**

“

Juming produces with inclination degree of 10° ,15°

”

| Belt Width | Type       | Dimension |      |      |      |     |     |     |   |     |      | z   | Channel |          |
|------------|------------|-----------|------|------|------|-----|-----|-----|---|-----|------|-----|---------|----------|
|            |            | ØD        | L1   | m    | M    | h   | n   | b   | t | r   | β=5° |     |         |          |
|            |            |           |      |      |      |     |     |     |   |     | B    |     |         | H        |
| 400        | SAVR-400   | 89.1      | 220  | 640  | 690  | 100 | 60  | 120 | 6 | 150 | 584  | 290 | M12     | 100x50x5 |
| 450        | SAVR-450   |           | 245  | 690  | 740  |     |     |     |   |     | 634  |     |         |          |
| 500        | SAVR-500   |           | 270  | 740  | 790  |     |     |     |   |     | 684  |     |         |          |
| 600        | SAVR-600-1 |           | 320  | 840  | 890  |     |     |     |   |     | 783  |     |         |          |
| 650        | SAVR-650   |           | 365  | 890  | 940  |     |     |     |   |     | 872  |     |         |          |
| 600        | SAVR-600-2 | 114.3     | 320  | 840  | 890  | 100 | 60  | 120 | 6 | 180 | 800  | 345 |         |          |
| 750        | SAVR-750   |           | 415  | 1040 | 1090 |     |     |     |   |     | 950  |     |         |          |
| 800        | SAVR-800   |           | 440  | 1090 | 1140 |     |     |     |   |     | 999  |     |         |          |
| 900        | SAVR-900   |           | 490  | 1190 | 1240 |     |     |     |   |     | 1099 |     |         |          |
| 1000       | SAVR-1000  |           | 540  | 1290 | 1340 |     |     |     |   |     | 1217 |     |         |          |
| 1050       | SAVR-1050  | 139.8     | 565  | 1340 | 1390 | 120 | 100 | 170 | 6 | 180 | 1267 | 390 | M16     | 150x75x6 |
| 1200       | SAVR-1200  |           | 640  | 1490 | 1540 |     |     |     |   |     | 1416 |     |         |          |
| 1400       | SAVR-1400  |           | 750  | 1730 | 1790 |     |     |     |   |     | 1614 |     |         |          |
| 1600       | SAVR-1600  | 165.2     | 850  | 1930 | 1990 | 160 | 120 | 200 | 6 | 250 | 1813 | 550 |         |          |
| 1800       | SAVR-1800  |           | 980  | 2220 | 2280 |     |     |     |   |     | 2022 |     |         |          |
| 2000       | SAVR-2000  |           | 1080 | 2420 | 2480 |     |     |     |   |     | 2222 |     |         |          |
| 2200       | SAVR-2200  |           | 1180 | 2620 | 2680 |     |     |     |   |     | 2431 |     |         |          |
| 2400       | SAVR-2400  |           | 1280 | 2820 | 2880 |     |     |     |   |     | 2630 |     |         |          |
|            |            |           |      |      |      | 180 | 150 | 250 | 9 | 250 |      | 590 | M20     | 200x80x7 |



| Belt Width | Drum length of Pulley |      |
|------------|-----------------------|------|
|            | mm                    | Inch |
| 400        | 500                   | 19   |
| 450        | 550                   | 21   |
| 500        | 600                   | 24   |
| 600        | 700                   | 28   |
| 750        | 900                   | 36   |
| 800        | 1000                  | 39   |
| 900        | 1100                  | 43   |
| 1000       | 1200                  | 47   |
| 1050       | 1250                  | 49   |
| 1200       | 1400                  | 55   |
| 1400       | 1600                  | 63   |
| 1600       | 1800                  | 71   |
| 1800       | 2000                  | 78   |
| 2000       | 2200                  | 87   |
| 2200       | 2400                  | 95   |
| 2400       | 2600                  | 102  |

Juming Company produces a wide variety of pulleys which is designed with high quality to meet the standard of CEMA. Steel rim, hub, end disc are combined into an integral component by continuous welded bond to maximize pulley's strength, balance, and concentricity .

Drum pulley is designed by standard straight tube which can also designed with crown tube depended on customer's demand.

Standard design of pulley:

- Key type
- Power Lock
- Taper Lock

Lagging Type :

- Hot vulcanized lagging
- Ceramic lagging

# JM Roller

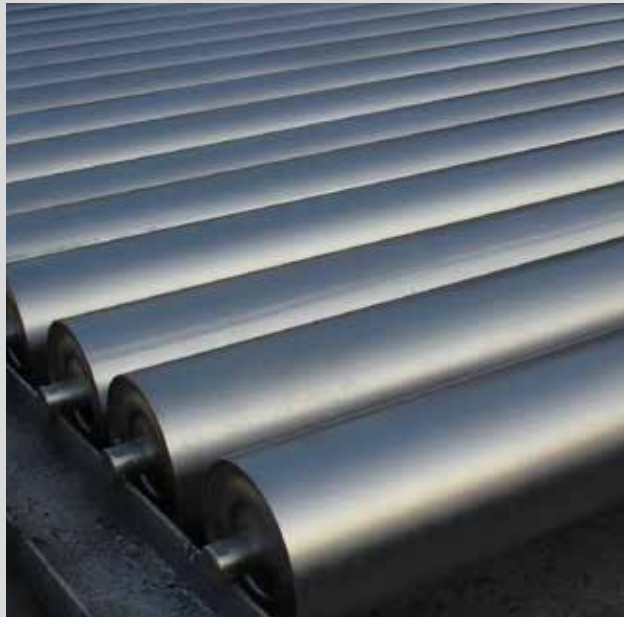
## PRODUCT CATALOGUE

No.46 Jianshe Street, Shijiazhuang City , Hebei Province  
China 050000



Website: [www.HBJUMING.com](http://www.HBJUMING.com)

Our vision is to be Perfect,  
Excellent and Best  
in the World



Together, We Make It Better.



Together, We Make It Better.



# China Juming Roller

HEBEI JUMING CONVEYOR MACHINERY CO., LTD

Tel: +86-311-**69028879** Website:[www.hbjuming.com](http://www.hbjuming.com)

Fax: +86-311-**86250796** Email:[sales@hbjuming.com](mailto:sales@hbjuming.com)